



3. LIVING AND WORKING METHODS

To live sustainably with earth and with each other. The work spaces and residential living is integrated with outdoor all-day activities along with environmental repair systems and culture. By mixing and overlapping functions and nature a living city can flourish.

RESIDENTIAL LIVING
Our proposal offers around 1000 new apartments in mix of lower blocks (punkthus) and traditional block buildings (lamellhus) where large social, common spaces are prioritized. A structure that offer closeness to nature and safe areas for play and outside life closer to built areas for younger generations. To encourage sustainable and social neighbourhood communities, common functions as places to meet can be shared and create a more lively community. E.g. larger entrances for the buildings as living rooms for the residents.

Cold as a friend: using the cold climate to create optimal living conditions. We can learn from old methods of living with season. Here every apartment in the new areas is equipped with a cool room to store food, lowering energy consumption. See-through walls are layered to create micro-climates and winter gardens to cultivate vegetables and gardening, also allowing maximum daylight. All flats should have façades in at least two directions allowing for a life that can adapt to the changing season and daylight.

WORKING IN PITEÅ
Several types of businesses can be situated in a central urban area with a broad variety of nature, sports, meditation hubs, outdoor offices and culture. The recreational functions and cultural expo area overlaps and create a melting pot of opportunities.

4. INDUSTRIAL CHARACTER & CIRCULARITY FRAMEWORK

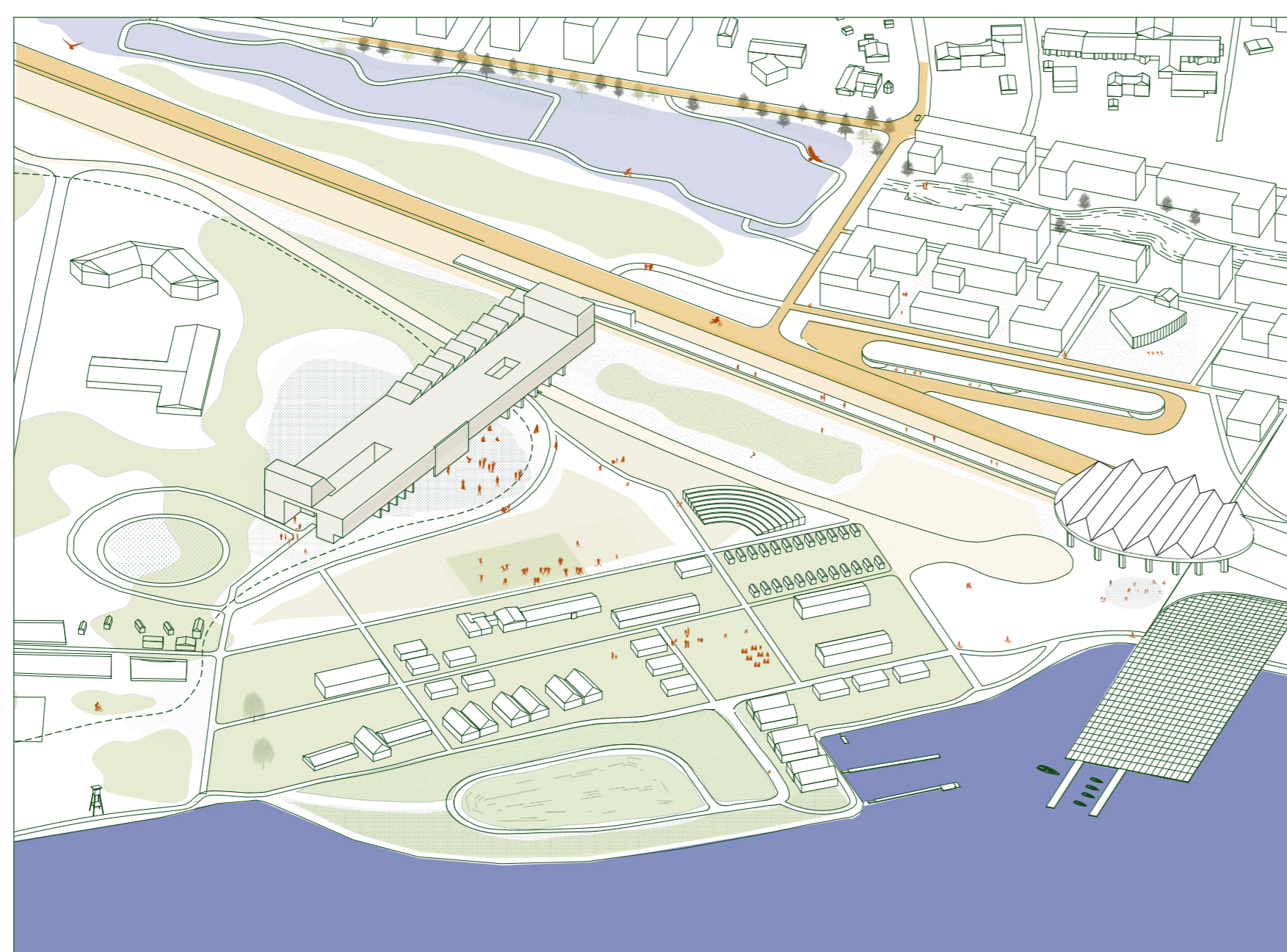
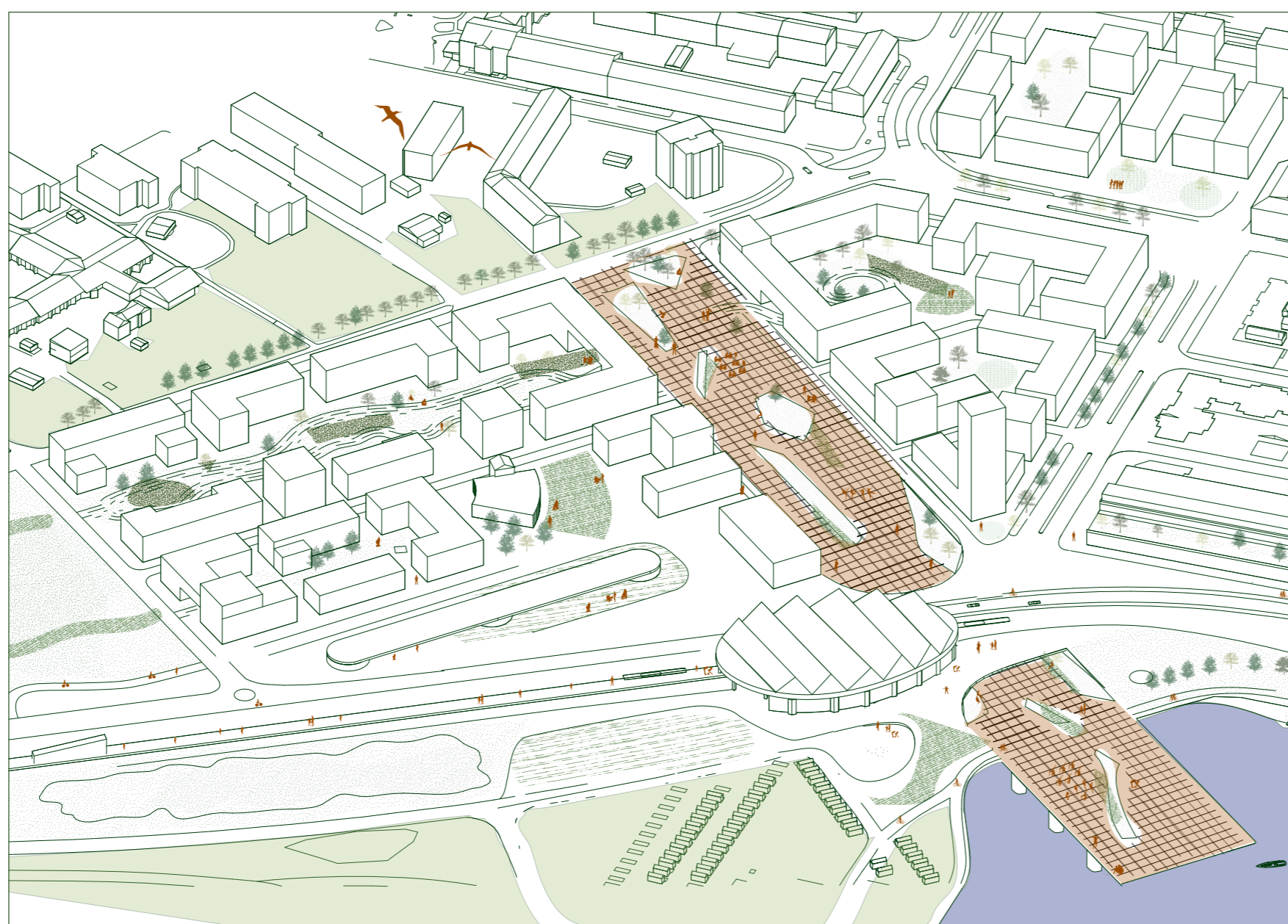
CIRCULAR FRAMEWORK
A new circular aesthetic defines all new constructions combining Piteå historical wood façades character and material reuse. This manual provides a framework and reference for all new constructions in Piteå and establishes parameters for façades and structure in the construction of all new buildings.

EXPO/FAIR AREA & SÖRFJÄRDEN LEISURE
Flourishing ecosystems are active ones, with the arrival of the new expo and reprogramming of Sörfjärden this area becomes active at all hours of the day, and during all seasons with culture, music festivals, tourism and businesses. Located next to the new station, this mixed use hub becomes a new meeting point for several interests and a fun destination. The Expo area hosts the Nordics Expo for future green energy and sustainable industrial development. The area is a meeting place for small businesses, conferences, outdoor sport events and festivals.

CULTURAL HUB FOR LOCALS AND VISITORS
The popular camping and harbour are enhanced with focus on cultural activities, restaurants and creative initiatives.

NATURE WALKS
Nature walks are intermittent with areas for practicing meditation and mindfulness and new points of view of the industrial landscape. Sculpture exhibitions are also part of this natural walk paths along all the waterfront.

CULTURE CENTRE BUILDING
The former train tracks house (Lokstallet) is kept in its entirety and transformed in a cultural house for all Piteå.



COLOURS & MATERIAL

Piteå has a long history of building with wood and when using new material that is not circularly sourced we propose wood. Its a versatile and sustainable material, giving warmth to the cityscape. We propose a warm palette of red, orange, pink, rust and natural wood colours to be used on all new buildings, a beautiful addition to the city and a snow covered landscape.

STORM WATER RESERVOIR PARK Recreational & sustainable eco-services

This area is divided into five zones stretching from the frequently flooded part (zone 1) to the top level zone that is planted with shrubs and trees in a sloping environment. The storm water reservoir is pouring into the residential living areas as built channel but its storm water function with it's cleaning effects is maintained in the water reservoir park.



Rudbeckia perennialis
Donaricum "Little Leo"
Delphinium cultorum
Centaurea cyanea
Pinus sylvestris
Betula pubescens
Cornus baccinatus



Malva communis
Malva tooringo var. sargentii
Betula pubescens
Pinus sylvestris
Blocks in the sloping terrain
Syringa vulgaris
Juncus effusus
Iris pseudacorus
Carex
Phacelia
Lemna minor
Typha sp Phragmites australis
Alisma plantago aquatica

EXPO, OFFICE AREA & FORMER TRAIN TRACKS Repairing contaminated land

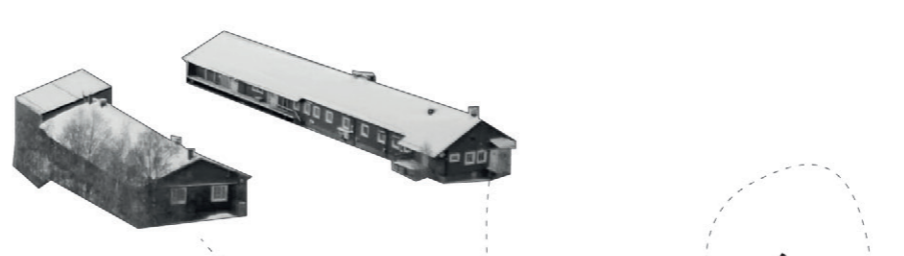
Due to contaminations by previous operations, this area call for hardy plants that thrive on rough terrain. Therefore, the open meadow are planted with plants that can repair and stand brownfield conditions to create a post industrial park area that resonates with history and upcoming office park. Create recreational area combined with cultural usage, biodiversity and rain beds.



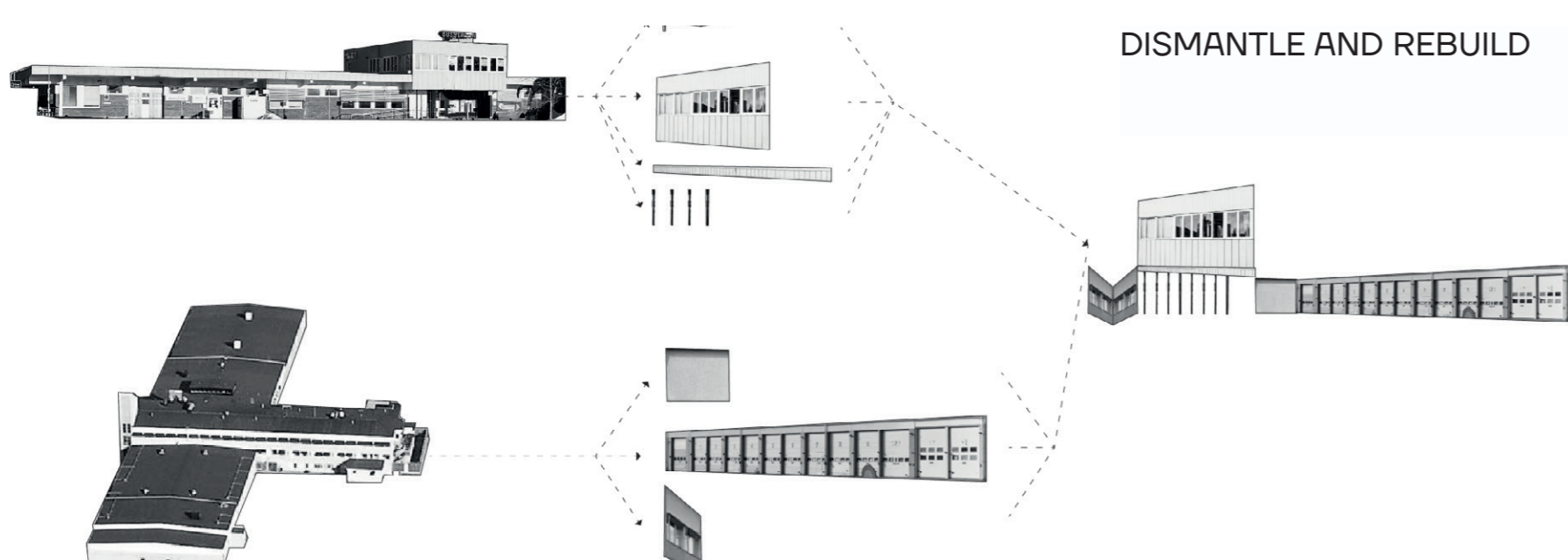
BUILD ON TOP



CUT AND BUILD ON TOP



RELOCATE



DISMANTLE AND REBUILD